



# Fast, Effective Impact Cleaning

## Toftejorg TZ-74 Brew Kettle Version Rotary Jet Head

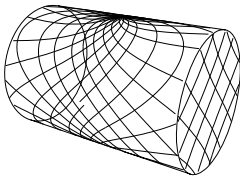
### Application

The Toftejorg TZ-74 Brew Kettle Version is a special version of the Toftejorg TZ-74 rotary jet head. It provides 3D indexed impact cleaning over a defined time period. It is automatic and represents a guaranteed means of achieving quality assurance in tank cleaning. The device is suitable for processing, storage and transportation tanks and vessels between 50 and 500 m<sup>3</sup> (13,000 to 130,000 US gallons). The Toftejorg TZ-74 Brew Kettle Version is equipped with special sealings, which makes it particularly well-suited to work under rough conditions e.g. in brew kettles, where fibres, particles etc. in the cleaning media may be re-circulated through the machine.

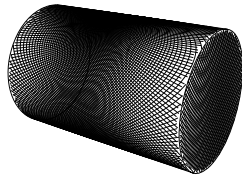
### Working principle

The flow of the cleaning fluid makes the nozzles perform a geared rotation around the vertical and horizontal axes. In the first cycle, the nozzles lay out a coarse pattern on the tank surface. The subsequent cycles gradually make the pattern more dense, until a full pattern is reached after 8 cycles.

### Cleaning Pattern



First cycle



Full pattern

The above drawings show the cleaning pattern achieved on a cylindrical horizontal vessel. The difference between the first cycle and the full pattern represents the number of additional cycles available to increase the density of the cleaning.

### Standard Design

The choice of nozzle diameters can optimise jet impact length and flow rate at the desired pressure.

### Materials

316L (UNS S31603), PTFE, PEEK, ETFE, FPM, TFM



### Technical Data

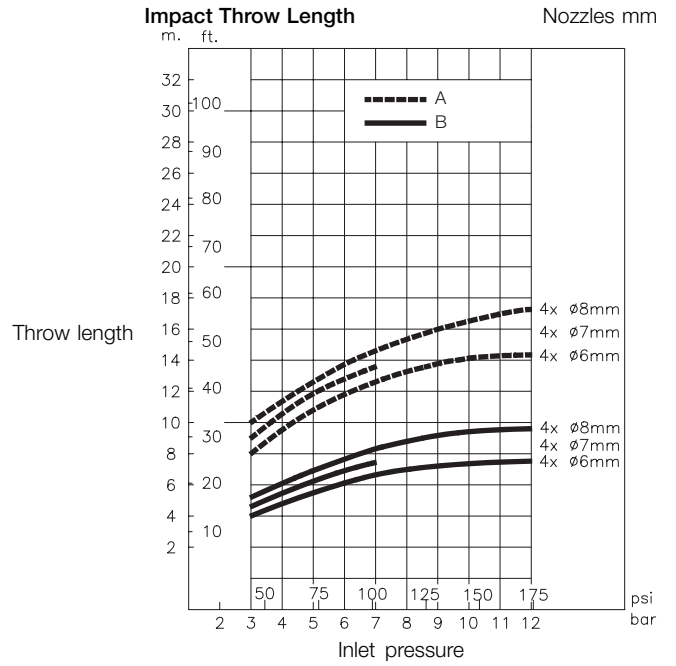
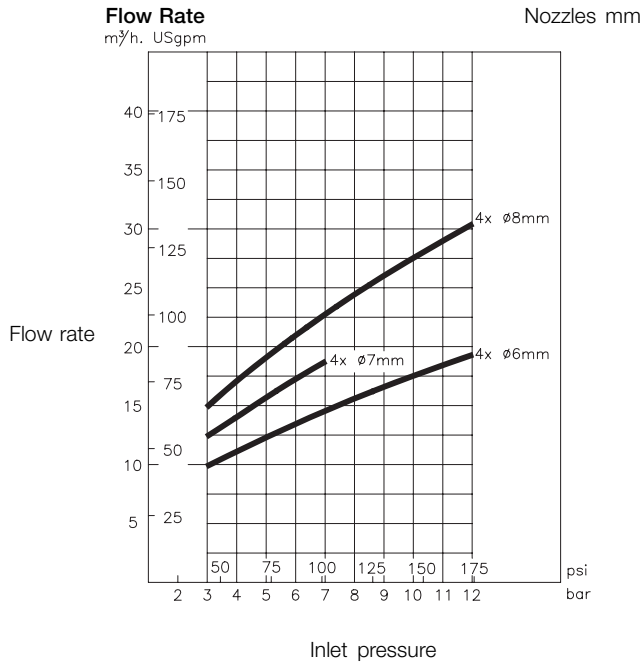
Weight:	.6.1 kg (13 lbs)
Lubricant:	Self-lubricating with the cleaning fluid
Working pressure:	.3 - 12 bar (44 - 174 psi)
Recommended pressure:	.5 - 6.5 bar (72 - 94 psi)
Max. working temperature:	.95 °C (203 °F)
Max. ambient temperature:	.140 °C (284 °F)
Max throw length:	.8 - 17 m (26 - 56 ft)
Impact throw length:	.4 - 10 m (13 - 32 ft)
Standard female thread:	.1 1/2" Rp (BSP) or NPT, 2" NPT
Standard Surface finish:	.Ra 0.5µm (20µ inch) exterior

### Certificate

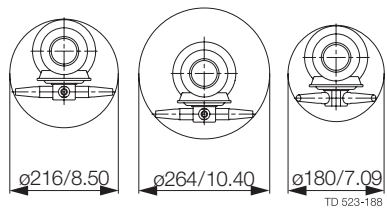
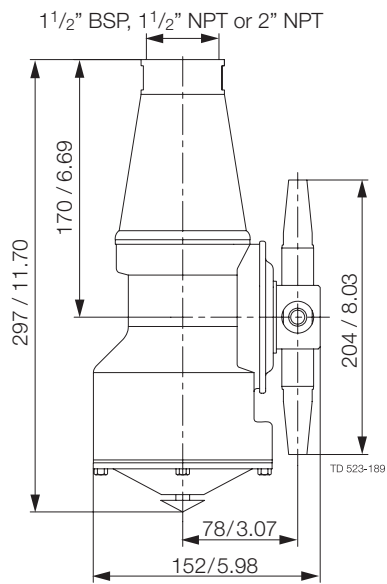
2.1

### Caution

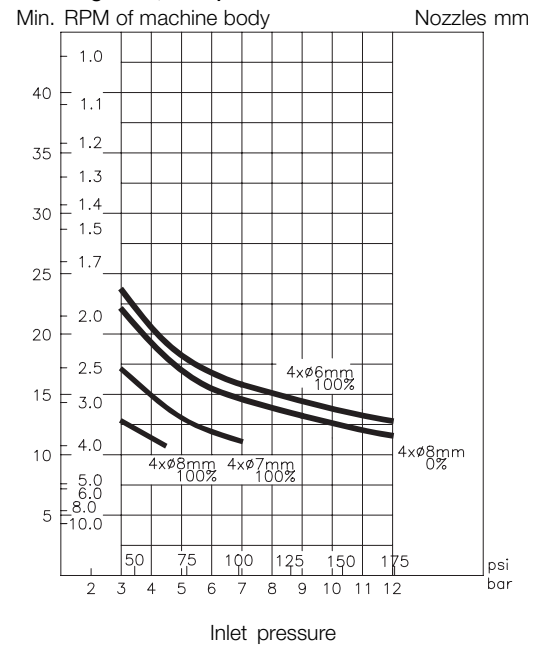
Do not use for gas evacuation or air dispersion.



### Dimensions (mm / inch)



### Cleaning Time, Complete Pattern



## Ordering

Please specify nozzle size, inlet/guide configuration and connections and confirm application suitability

Sizing/selection and installation drawings are available in Alfa Laval's Selection Tools for Tank Cleaning Equipment.

## Options

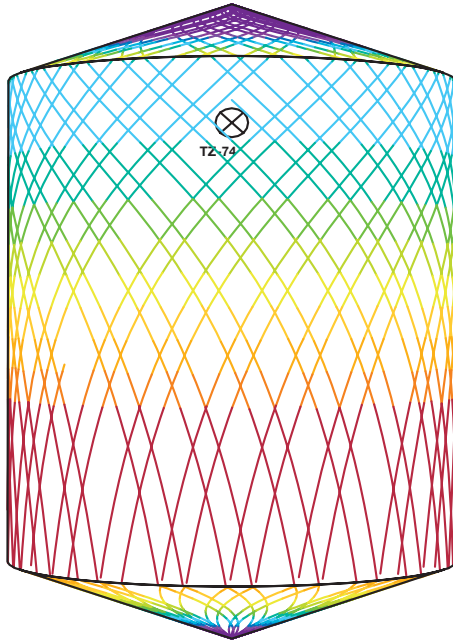
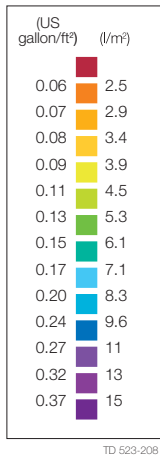
Electronic rotation sensor to verify 3D coverage.

## TRAX simulation tool

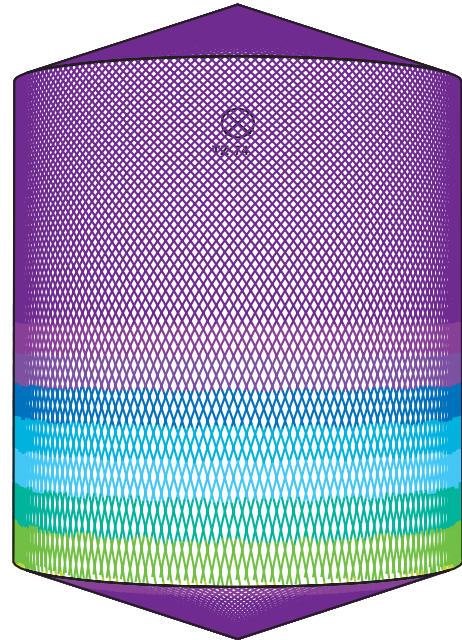
TRAX is a unique software that simulates how the Toftejorg TZ-74 Brew Kettle Version performs in a specific tank or vessel. The simulation gives information on wetting intensity, pattern mesh width and cleaning jet velocity. This information is used to determine the best location of the tank cleaning machine and the correct combination of flow, time and pressure to implement.

A TRAX demo containing different cleaning simulations covering a variety of applications can be used as reference and documentation for tank cleaning applications. The TRAX demo is free and available upon request.

## Wetting Intensity



D5m H6m, Toftejorg TZ-74 Brew Kettle Version, 4 x ø6 mm, 100% Time = 4.4 min., Water consumption = 907 l (240 gallon)



D5m H6m, Toftejorg TZ-74 Brew Kettle Version, 4 x ø6 mm, 100% Time = 18.2 min., Water consumption = 3760 l (993 gallon)

ESE00323EN 1001

The information contained herein is correct at the time of issue,  
but may be subject to change without prior notice.

---

**How to contact Alfa Laval**

Contact details for all countries  
are continually updated on our website.  
Please visit [www.alfalaval.com](http://www.alfalaval.com) to  
access the information direct.